



**pex**  
**STEEL CONSTRUCTION**

ISO 9001:2015 ; ISO 14001:2015 ; OHSAS 18001:2007



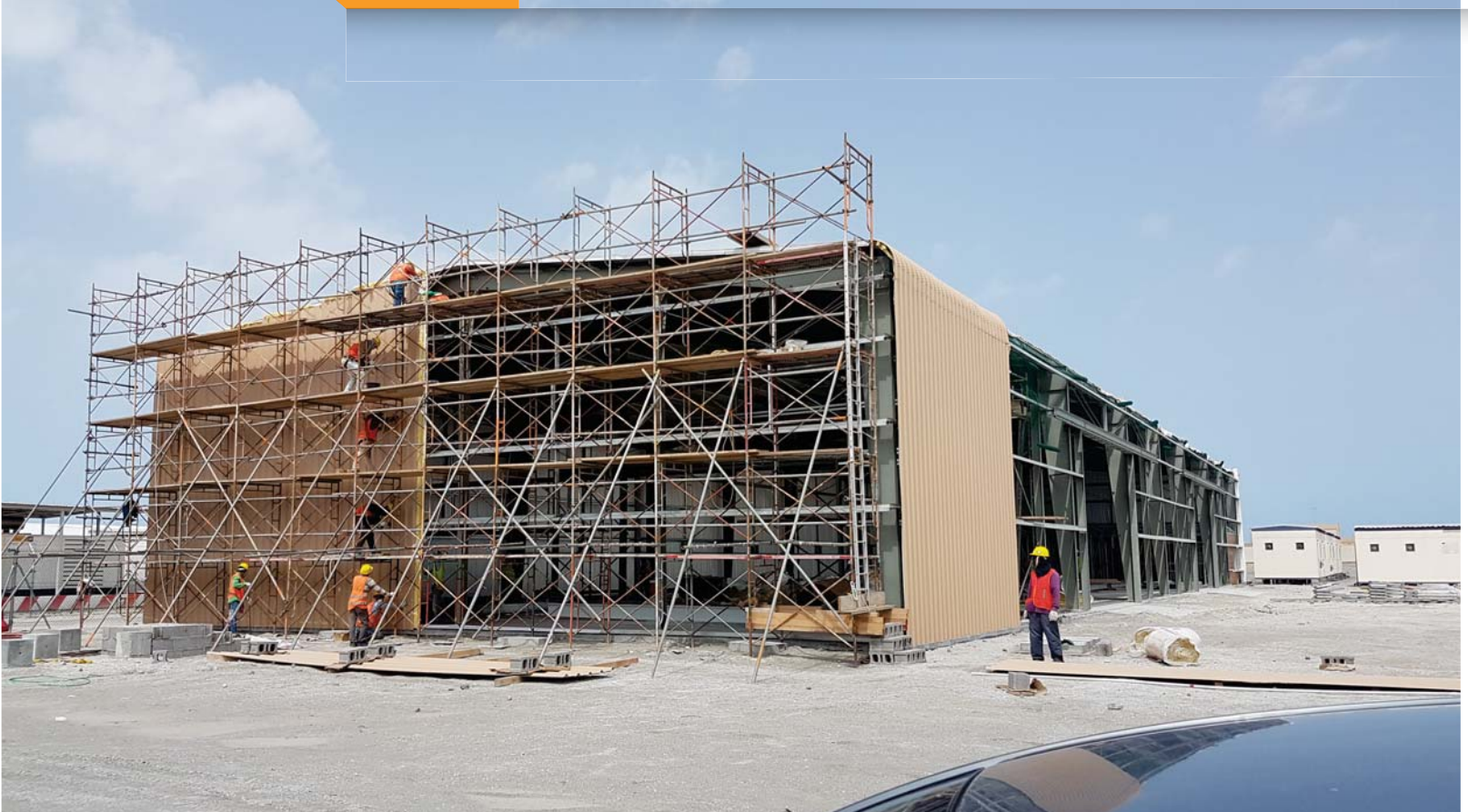
**STEEL  
STABILITY  
IS OUR  
ABILITY**



**"Apex STEEL CONSTRUCTION W. L. L."**



"Apex STEEL CONSTRUCTION W. L. L."



STEEL STABILITY IS OUR ABILITY

# Table of Contents

1-	Introduction	3
2-	Engineering and Contracting	4
3-	Strength, Goals and Objectives	5
4-	Organizational Chart	6
5-	Activities and Services	8
6-	Projects Done by Apex Steel	9
7-	Our Business Contact, Our People	10
8-	ISO Certificaticates	11



Steel  
Stability  
Is Our  
Ability

ISO 9001:2015  
ISO 14001:2015  
OHSAS 18001:2007

Steel  
Stability  
Is Our  
Ability

## VISION

To be the leading company in Pre-Engineered and Hot rolled structural steel buildings Supply and Erection in GCC Region.

## MISSION

To contribute to the growth of Bahrain economy by effectively participating in the construction of Mega projects with quality and cost effective services

Work together and be Safe together

# INTRODUCTION

Apex Steel Construction W. L. L., Is a prominent engineering and contracting company in the Kingdom of Bahrain with reputation that has been gained over the past years we mainly appreciate the strong business acumen of the founders, professionalism, strategic alliances and diversified resources, dynamic strategies and differentiated offerings.

Apex focuses on both product innovations and process innovations within the context of dynamic business environment and changing market conditions.

Managing quality, diversifying resources, differentiating offerings, delighting customers are just few components that are integrated in the corporate vision/ mission, objectives and strategy of the company that reflects on the approaches and directions of Apex

The following pages provide an overview of our activities, services, elistrate our enormous potentials, and serve as pre-qualification document for the potential projects/ clients.



# Engineering and Contracting

"Apex Steel Construction W. L. L." is one of the significant operating company, we provide a vast range of services to customers base in the Kingdom of Bahrain as well in GCC. Our focus is precision engineering coupled with high quality service, a proposition that has radiated its presence through everything we do. We cover the entire gamut of the engineering and contracting business. We intend to accomplish our goals and objectives through the different project phases: Pre - construction, Construction and Post-construction.

We extend our support toward building up a workgroup team to take on the challenges put forward in the line on construction of High rise buildings, Warehouse/Factory Sheds, Commercial/Residential building project, and shopping arcades.

The division comprise of well qualified technical staff to spear head the challenges of construction industry with full compliance of local as well as international safety laws and standards.

We look forward to associate ourselves among the best leading construction company in the country as well as in the region.

**STEEL STABILITY IS OUR ABILITY**



# STRENGTH, GOALS AND OBJECTIVES

## Our Stamp of Assurance

Our stamp of Assurance is imbibed in everything we do – it is an intrinsic part of our culture. Exceeding the standards is the norm at “[Apex Steel Construction W. L. L.](#)” – A habit infused in our employee psyche. Our cutting edge products and services are designed keeping in mind the client’s needs and desires - in the backdrop of evolving trends and a rapidly changing environment. We will never waver away from staying in the course and fulfilling our responsibility with diligence. From conceptualizing the idea to laying down the final brick, we will carry our duty with utmost commitment. We do this by surgically analysing and carefully engineering seamless solutions adhering to the ethos of our organizational culture.

Excellence continues to be at heart of everything we do and we will continue our drive in maximizing value for all our customers

We firmly believe it all about going the extra mile and transcending our client’s expectations – our philosophy continues to be that the extra mile has no traffic signals - helping us deliver on the

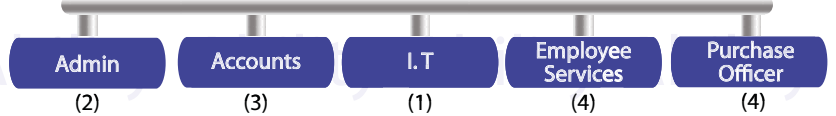
**STEEL STABILITY IS OUR ABILITY**

# ORGANIZATION CHART

Managing Director

General Manager

HR and Account

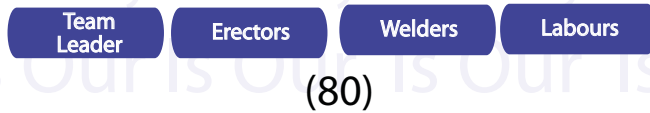


Project Engineer (1)

Supervisor (3)

Project Engineer (1)

Supervisor (3)







Steel  
Stability  
Is Our  
Ability

Steel  
Stability  
Is Our  
Ability

Steel  
Stability  
Is Our  
Ability

Steel  
Stability  
Is Our  
Ability

Steel  
Stability  
Is Our  
Ability

# ACTIVITIES & SERVICES

## Engineering and Contracting

- Turnkey Projects for Steel Construction
- Mechanical Engineering Contracting
- Steel Building Construction
- Pre – Engineered Buildings  
(Commercial - Industrial)
- Industrial Maintenance
- Oil Field Pipe line Fabrication and Installation
- Manpower Supply

## SOME OF THE PROJECTS COMPLETED BY APEX STEEL

S.R. NO.	NAME OF PROJECTS	CLIENT/ CONSULTANT	CONTRACT VALUE (BD.)
1	Dragon Mall	Nass Contract and Gulf house	17,500.000 BD
2	Avenues	AIC/ Nass/ MSCEB	544,000.000 BD
3	EKK Training Center TOYOTA	ARM/ ES MCSEB	146,000.000 BD
4	AC Royal center	Chap/ GHE	70,000.000 BD
5	IKEA Store Project	M/s. Kooheji Contractor / M/s.BSBG, Dubai	945,750.000 BD
6	Amazon Data Center	M/s. Cebarco / M/s. AECOM	344,145.000 BD
7	Pumping Stations at Juffair and Busaiteen	M/s. AIMC/ M/s. Nass Contracting/ M/s. Mot Macdonald	9,000.000 BD
8	Pumping Stations at Isa Town abd Durrat Al Bahrain	M/s. AIMC/ M/s. Nass Contracting/ M/s. Mot Macdonald	20,000.000 BD
9	Structural steel erection works for cast House at Alba, Line 6 Expansion	M/s. AIC/ M/s. Bechtel/ M/s. ALBA	1,062,875.000 BD
10	Structural steel erection works for ECB, Power Plant at Alba, Line 6 Expansion	M/s. AIC/ M/s. GAMA/ M/s. ALBA	28,000.000 BD
11	Factory Building for Armacell at BIIP	M/s. AIMC / M/s. Tebodin	67,000.000 BD
12	Dilmunia	Alusted/ CCT/ M/s. Al omran	132,000.000 BD

Steel  
Stability  
Is Our  
Ability

Steel  
Stability  
Is Our  
Ability

Steel  
Stability  
Is Our  
Ability

Steel  
Stability  
Is Our  
Ability

Steel  
Stability  
Is Our  
Ability

## **Our Business Contacts**

Our excellent dedicated and prompt services to the Government and Private Sectors have resulted into lasting relationships with the institutions as well as individuals from all levels. Ability to cater the needs being small or big with equal professionalism have earned us respect among all the influential circles in social and commercial segments of the society.

We have been highly recommended by people for our reliability & credibility. This has been our major strength and pride. The fact that we have been preferred by several well-reputed companies in the region for joint ventures, international projects development manifests the strong standing we enjoy in the business circles.

## **Our People**

Our employees are experts at identifying exciting opportunities, assembling the right mix of resources, implementing plans and delivering results. At "Apex Steel Construction W. L. L.", everyone is empowered to be an entrepreneur in his area of expertise, to seek out new opportunities for professional growth. We have passion for business and a clear vision of what we want to accomplish.

Our People are dedicated to Quality, Services and Values, Our reputation in these areas have made us well repeted as we developed into Poiner Contractor in the Kingdom of Bahrain. We endeavour to work with our valued clients to achieve services which meets their specific requirements and needs.

# ISO Certificate




The management system of  
**Apex Steel Construction Company W.L.L.**

Building 1835, Road 4635, Block 646, Al Nuwaidrat, Sanad,  
Kingdom of Bahrain.

has been assessed and certified as meeting with the requirements of

**ISO 14001:2015**

**Under the Scope:**  
\*Steel Fabrication, Supply and Erection of Pre-Engineered Steel Buildings Structures (PEB) and Hot Rolled Steel Structures (HRSS).\*



**Certificate Number** : BH180007  
**Issue date** : 03<sup>rd</sup> October 2018.  
**Valid till** : 02<sup>nd</sup> October 2019.

*[Signature]*  
Authorized Signature  
Resource Inspections Canada Incorporated Co.  
[www.ricionline.com](http://www.ricionline.com)

\*This certificate remains valid subject to successful surveillance audits and maintenance of management system as per certification rules and procedures of Resource Inspections Canada Incorporated Co.  
\*Further clarification regarding scope of this certificate and applicability of ISO 14001:2015 requirements may be obtained from the organization.  
\*This certificate remains property of Resource Inspections Canada Incorporated Co., to whom it must be returned upon request.  
\*Unique Certificate Identifier Number: MSCB-104-77022



Page 1 of 1

Office 44, Building 2126, Road 1529, Block 115, Hidd, Kingdom of Bahrain  
Email: [scheme@ricionline.com](mailto:scheme@ricionline.com)




The management system of  
**Apex Steel Construction Company W.L.L.**

Building 1835, Road 4635, Block 646, Al Nuwaidrat, Sanad,  
Kingdom of Bahrain.

has been assessed and certified as meeting with the requirements of

**OHSAS 18001:2007**

**Under the Scope:**  
\*Steel Fabrication, Supply and Erection of Pre-Engineered Steel Buildings Structures (PEB) and Hot Rolled Steel Structures (HRSS).\*



**Certificate Number** : BH180007  
**Issue date** : 03<sup>rd</sup> October 2018.  
**Valid till** : 02<sup>nd</sup> October 2019.

*[Signature]*  
Authorized Signature  
Resource Inspections Canada Incorporated Co.  
[www.ricionline.com](http://www.ricionline.com)

\*This certificate remains valid subject to successful surveillance audits and maintenance of management system as per certification rules and procedures of Resource Inspections Canada Incorporated Co.  
\*Further clarification regarding scope of this certificate and applicability of OHSAS 18001:2007 requirements may be obtained from the organization.  
\*This certificate remains property of Resource Inspections Canada Incorporated Co., to whom it must be returned upon request.  
\*Unique Certificate Identifier Number: MSCB-104-77022



Page 1 of 1

Office 44, Building 2126, Road 1529, Block 115, Hidd, Kingdom of Bahrain  
Email: [scheme@ricionline.com](mailto:scheme@ricionline.com)




The management system of  
**Apex Steel Construction Company W.L.L.**

Building 1835, Road 4635, Block 646, Al Nuwaidrat, Sanad,  
Kingdom of Bahrain.

has been assessed and certified as meeting with the requirements of

**ISO 9001:2015**

**Under the Scope:**  
\*Steel Fabrication, Supply and Erection of Pre-Engineered Steel Buildings Structures (PEB) and Hot Rolled Steel Structures (HRSS).\*



**Certificate Number** : BH180007  
**Issue date** : 03<sup>rd</sup> October 2018.  
**Valid till** : 02<sup>nd</sup> October 2019.

*[Signature]*  
Authorized Signature  
Resource Inspections Canada Incorporated Co.  
[www.ricionline.com](http://www.ricionline.com)

\*This certificate remains valid subject to successful surveillance audits and maintenance of management system as per certification rules and procedures of Resource Inspections Canada Incorporated Co.  
\*Further clarification regarding scope of this certificate and applicability of ISO 9001:2015 requirements may be obtained from the organization.  
\*This certificate remains property of Resource Inspections Canada Incorporated Co., to whom it must be returned upon request.  
\*Unique Certificate Identifier Number: MSCB-104-77022



Page 1 of 1

Office 44, Building 2126, Road 1529, Block 115, Hidd, Kingdom of Bahrain  
Email: [scheme@ricionline.com](mailto:scheme@ricionline.com)

**For all queries, please contact us  
or forward correspondence to:**

**E-mail : [rajesh@apexsteel.co](mailto:rajesh@apexsteel.co)**

**Mailing Address : P.O. Box 26077, Manama, Kingdom of  
Bahrain**

**Corporate Address : Office 1835, Road 4635, Block 646,  
Manama, Kingdom of Bahrain**

**Telephone : +973 17 375909**

**Fax: +973 17 911448**

**Working Hours: Daily 8:00 AM – 5:00 PM**

**Friday : Closed**

**Our Time Zone/ vs.: (Asia Singapore - 5 hrs) (Europe GMT  
+ 3 hrs) (U.S.A. Eastern + 8 hrs Western + 11 hrs)**

Any communications, data or material received by Apex Steel Construction W. L. L. shall be deemed confidential and shall not be shared with any third party entity, Organization or business.

<http://www.apexsteel.co>